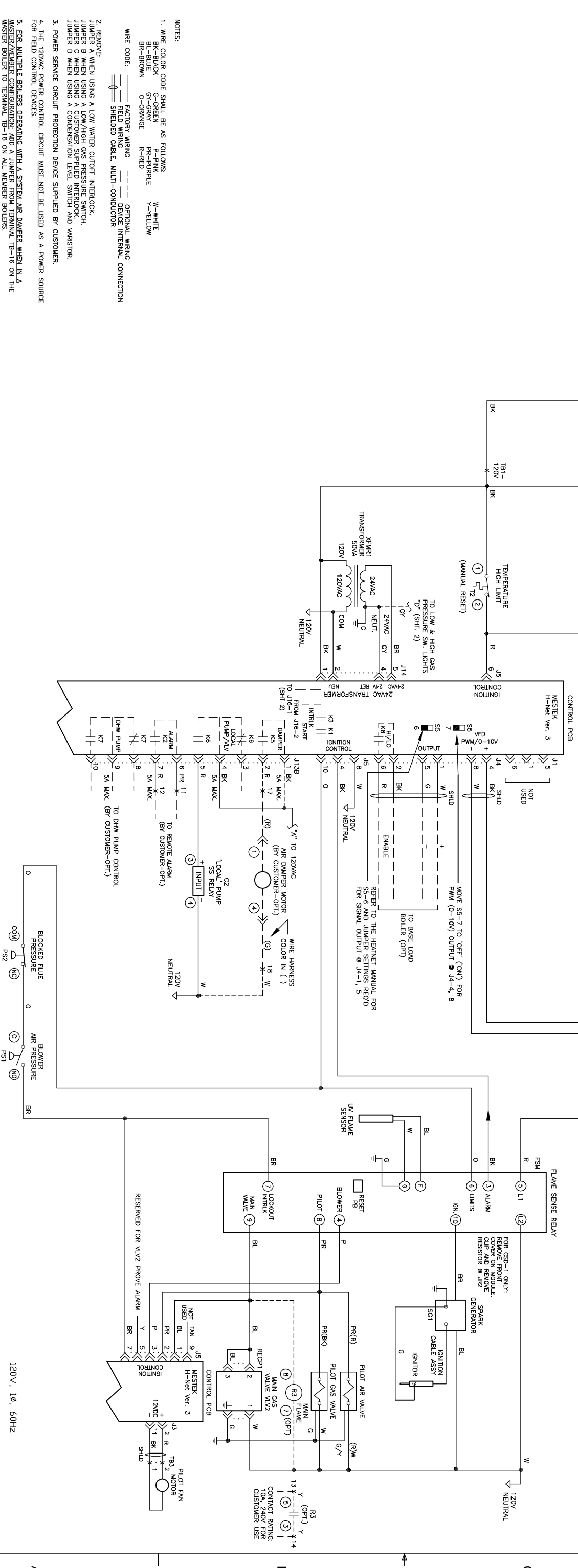
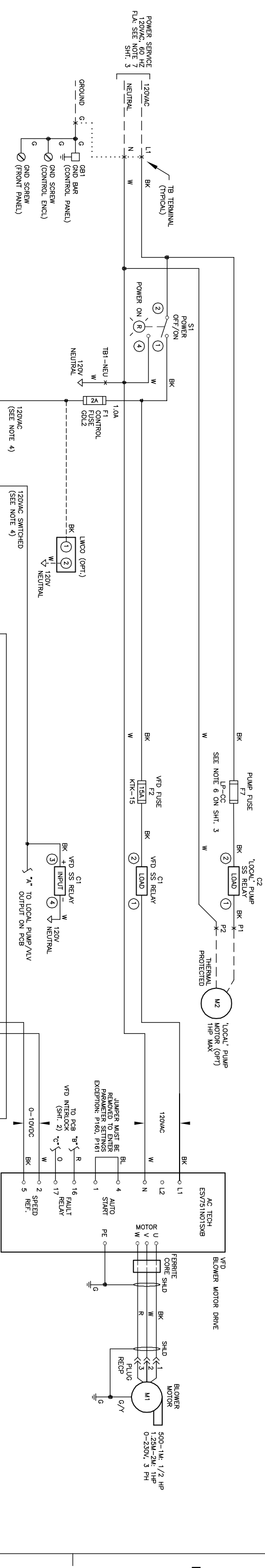


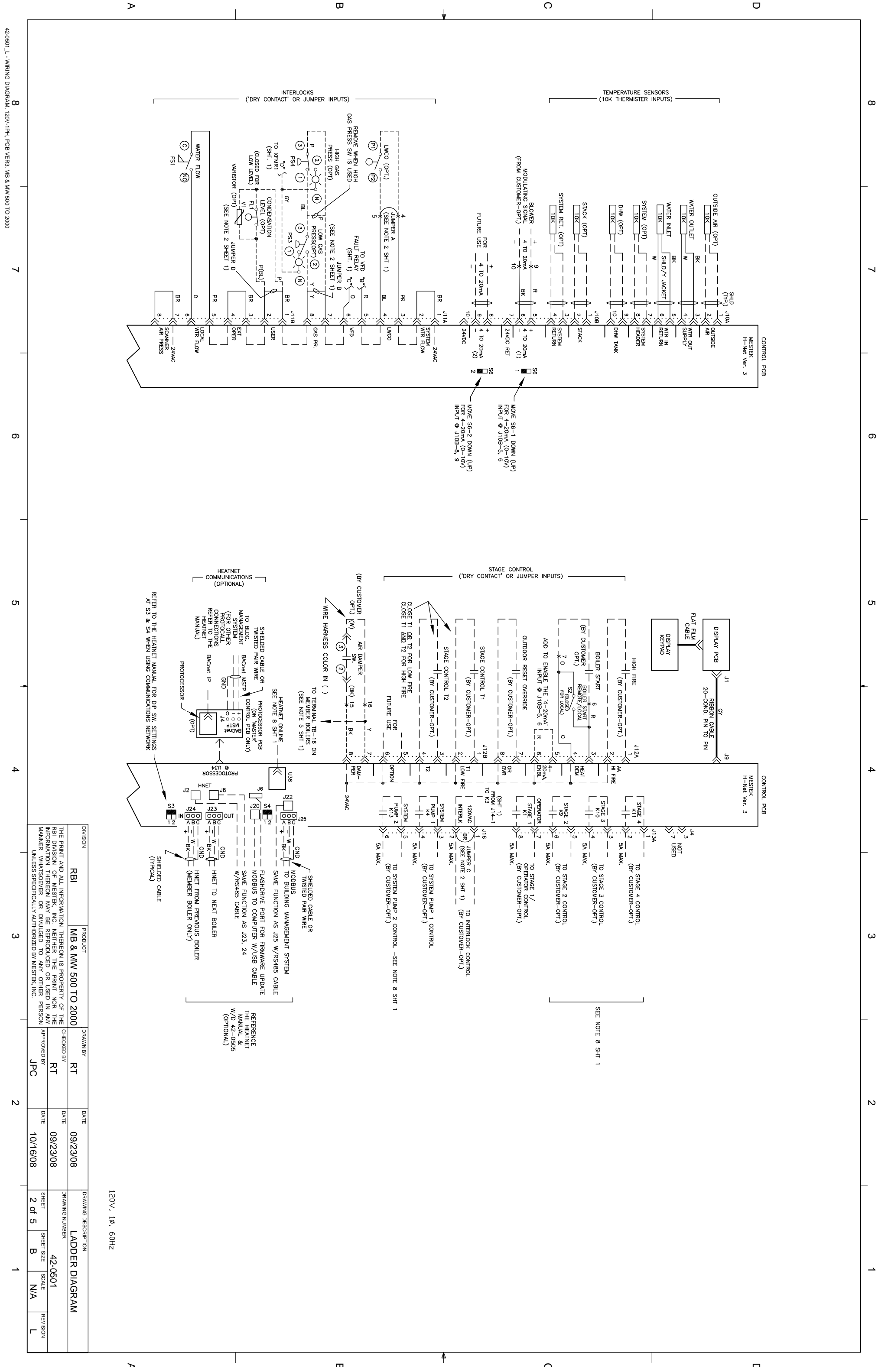
REVISIONS			
REV.	EN. NO.	DATE	APPROVED
L	11129	09/19/17	LAH
			JAS



- NOTES:
1. WIRE COLOR CODE SHALL BE AS FOLLOWS:
 BK-BLACK
 BR-BROWN
 GR-GREEN
 GY-GRAY
 W-WHITE
 PR-PINK
 R-RED
 Y-YELLOW

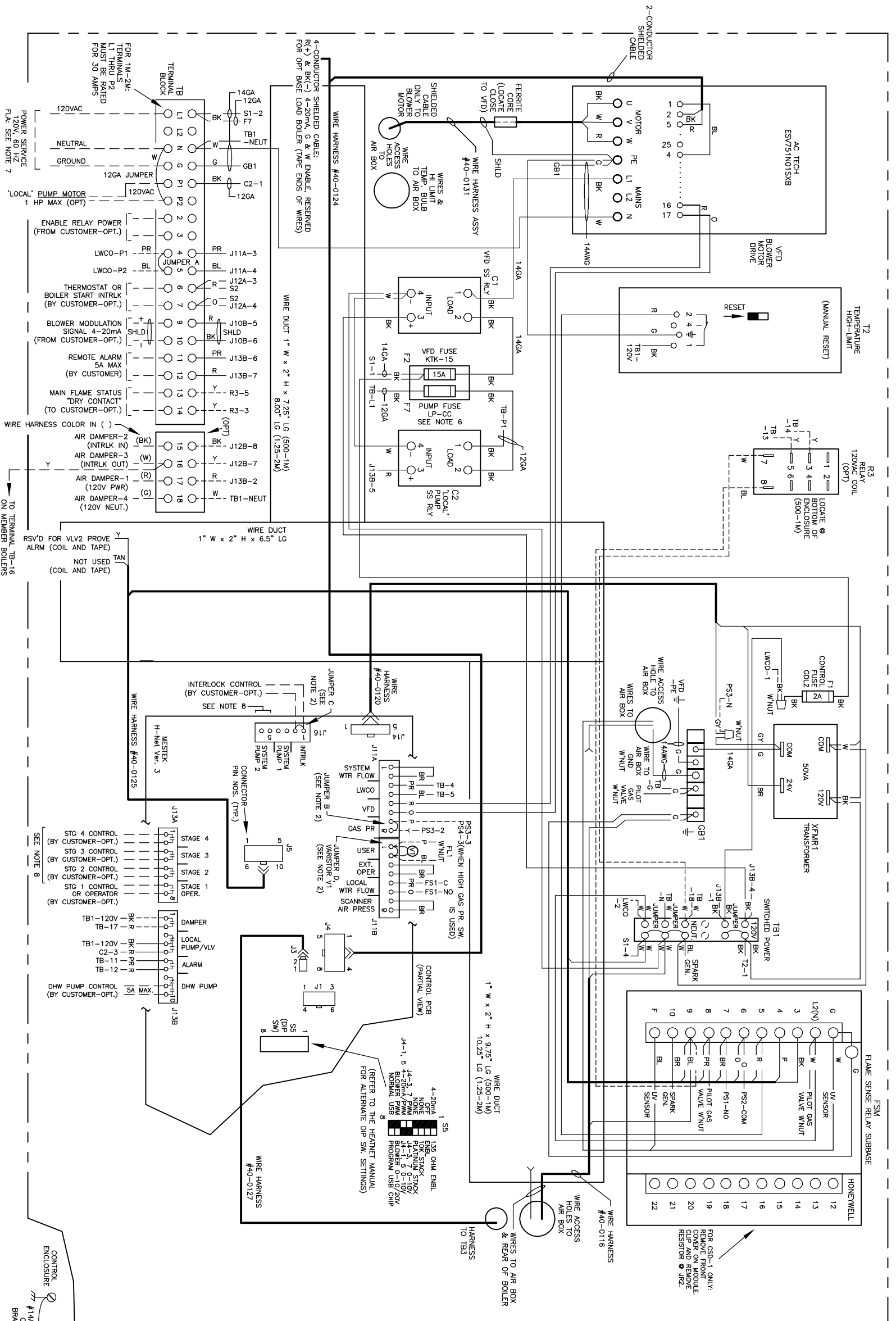
- WIRE CODE:
- FACTORY WIRING
 - FIELD WIRING
 - SHIELDED CABLE, MULTI-CONDUCTOR
 - OPTIONAL WIRING
 - DEVICE INTERNAL CONNECTION
2. REMOVE:
 JUMPER A WHEN USING A LOW WATER CUTOFF INTERLOCK.
 JUMPER B WHEN USING A LOW/HIGH GAS PRESSURE SWITCH.
 JUMPER C WHEN USING A CUSTOMER SUPPLIED INTERLOCK.
 JUMPER D WHEN USING A CONDENSATION LEVEL SWITCH AND VARISTOR.
 3. POWER SERVICE CIRCUIT PROTECTION DEVICE SUPPLIED BY CUSTOMER.
 4. THE 120VAC POWER CONTROL CIRCUIT MUST NOT BE USED AS A POWER SOURCE FOR FIELD CONTROL DEVICES.
 5. FOR MULTIPLE BOILERS OPERATING WITH A SYSTEM AIR DAMPER, WHEN IN A MASTER/SLAVE CONFIGURATION, ADD A JUMPER FROM TERMINAL TB-16 ON THE MASTER BOILER TO TERMINAL TB-16 ON ALL MEMBER BOILERS.
 - 6, 7 ---
 8. HEATNET ONLINE, STAGE 2, 3, 4 AND SYSTEM PUMP 2 OUTPUTS ARE NOT AVAILABLE WITH THE HEATNET LITE CONTROL PCB.

120V, 1ϕ, 60Hz	DRAWING DESCRIPTION		DRAWING NUMBER	
	LADDER DIAGRAM		42-0501	
DIVISION	PRODUCT	DRAWN BY	DATE	
RBI	MB & MW 500 TO 2000	RT	09/23/08	
THE PRINT AND ALL INFORMATION THEREON IS PROPERTY OF THE RBI DIVISION OF MESTEK, INC. NEITHER THE PRINT NOR THE INFORMATION THEREON MAY BE REPRODUCED OR USED IN ANY MANNER WHATSOEVER OR DIVULGED TO ANY OTHER PERSON UNLESS SPECIALLY AUTHORIZED BY MESTEK, INC.				
APPROVED BY	DATE	SHEET	SCALE	REVISION
JPC	10/16/08	1 of 5	N/A	L



120V, 1φ, 60Hz

DIVISION	PRODUCT	DRAWN BY	DATE	DRAWING DESCRIPTION
RBI	MB & MW 500 TO 2000	RT	09/23/08	LADDER DIAGRAM
THE PRINT AND ALL INFORMATION THEREON IS PROPERTY OF THE RBI DIVISION OF MESTEK, INC. NEITHER THE PRINT NOR THE INFORMATION THEREON MAY BE REPRODUCED OR USED IN ANY MANNER WHATSOEVER OR DIVULGED TO ANY OTHER PERSON UNLESS SPECIFICALLY AUTHORIZED BY MESTEK, INC.		CHECKED BY	DATE	DRAWING NUMBER
		RT	09/23/08	42-0501
		APPROVED BY	DATE	SHEET
		JPC	10/16/08	2 of 5
				SHEET SIZE
				B
				SCALE
				N/A
				REVISION
				L



NOTES:

- WIRE COLOR CODE SHALL BE AS FOLLOWS:
 BK-BLUE
 BR-BROWN
 G-GREEN
 O-ORANGE
 R-RED
 W-WHITE
 Y-YELLOW
- WIRE CODE:
 ○ FACTORY WIRING
 ○ SHIELDED CABLE, MULTICONDUCTOR
 ○ OPTION WIRING
- ALL WIRES SHALL BE #18AWG UNLESS SPECIFIED. WIRE TYPE SHALL BE TW, 600V, STRANDED 16-30, WITH INSULATION RATED FOR 105°C OR EQUIVALENT.
- USE CABLE TIES, CABLE FASTENERS, SPADE TERMINALS, MALE CONNECTORS, WIRENUTS, ETC. AS REQUIRED.
- REMOVE:
 JUMPER A WHEN USING A LOW WATER CUTOFF INTERLOCK.
 JUMPER B WHEN USING A LOW/HIGH GAS PRESSURE SWITCH.
 JUMPER C WHEN USING A CUSTOMER SUPPLIED INTERLOCK.
 JUMPER D WHEN USING A CONDENSATION LEVEL SWITCH AND WASTOR.
 JUMPER E WHEN USING A CUSTOMER SUPPLIED LEVEL SWITCH AND WASTOR.
- POWER SERVICE CIRCUIT PROTECTION DEVICE SUPPLIED BY CUSTOMER.
- THE 120VAC POWER CONTROL CIRCUIT MUST NOT BE USED AS A POWER SOURCE FOR FIELD CONTROL DEVICES.
- FOR MULTIPLE BOILERS OPERATING WITH A SYSTEM AIR DAMPER WHEN IN A MASTER/SLAVE CONFIGURATION, ADD A JUMPER FROM TERMINAL TB-16 ON THE MASTER BOILER TO TERMINAL TB-16 ON ALL MEMBER BOILERS.
- LOCAL PUMP MOTOR FUSE PART NOS. PER THE FOLLOWING:

PUMP	HP	120V, 1φ
PUMP FUSE	1/2	LP-CC-15
BUSSMANN OR EQUIVALENT	3/4	LP-CC-20
	1	LP-CC-20

PART NOS. ARE BASED ON THE FLA RATINGS AS STATED FOR 1φ AC INDUCTION MOTORS AS LISTED IN ARTICLE 430 OF THE NATIONAL ELECTRICAL CODE.

7. POWER SERVICE AS FOLLOWS:
 MAX. FLA (NOT INCLUDING LOCAL PUMP MOTORS) 500-750: 4.4A MAX @ 120V
 750-1000: 8.2A @ 120V
 1000-1250: 11.3A MAX @ 120V
 1250-2M: 11.3A MAX @ 120V

TOTAL FLA (INCLUDING BOILER AND LOCAL PUMP MOTORS):
 1.25-2M: 27.3A

BOILER PUMP	HP	120V
500-750	1/2	14.2A
750-1000	3/4	18.0A
1000-1250	1	22.0A
1250-2M	1 1/2	25.1A
	2	27.3A

TOTAL FLA DETERMINED BY USING THE FLA RATINGS FOR 1φ AC INDUCTION MOTORS AS LISTED IN ARTICLE 430 OF THE NATIONAL ELECTRICAL CODE.

8. STAGE 2, 3, 4 AND SYSTEM PUMP 2 OUTPUTS ARE NOT AVAILABLE WITH THE H-NET "LITE" CONTROL PCB

DATE	DRAWING DESCRIPTION
09/23/08	CONNECTION DIAGRAM
09/23/08	42-0501
10/16/08	3 of 5
	SCALE N/A
	REVISION L

DIVISION: RBI
 PRODUCT: MB & MW 500 TO 2000
 DRAWN BY: RT
 CHECKED BY: RT
 APPROVED BY: JPC

120V, 1φ, 60HZ

CONTROL ENCL. FRONT PANEL

OPTIONAL PAD 4-POLE TERM. BLK. (500-1000)

LOCATE @ BOTTOM OF CONTROL BOX

RSVD FOR VLV2 PROVE ALRM (COIL AND TAPE)

NOT USED (COIL AND TAPE)

BOILER START (CLOSED) FOR LOCAL

TO TERMINAL TB-16 ON MEMBER BOILERS (SEE NOTE 5)

WIRE HARNESS COLOR IN ()

AIR DAMPER-2 (INTRLK IN) (BK)

AIR DAMPER-3 (INTRLK OUT) (W)

AIR DAMPER-1 (120V PWR) (R)

AIR DAMPER-4 (120V NEUT.) (G)

MAIN FLAME STATUS "DRY CONTACT" (TO CUSTOMER-OPT.)

REMOTE ALARM 5A MAX (BY CUSTOMER)

BLOWER MODULATION SIGNAL 4-20mA (FROM CUSTOMER-OPT.)

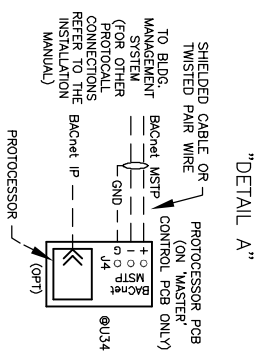
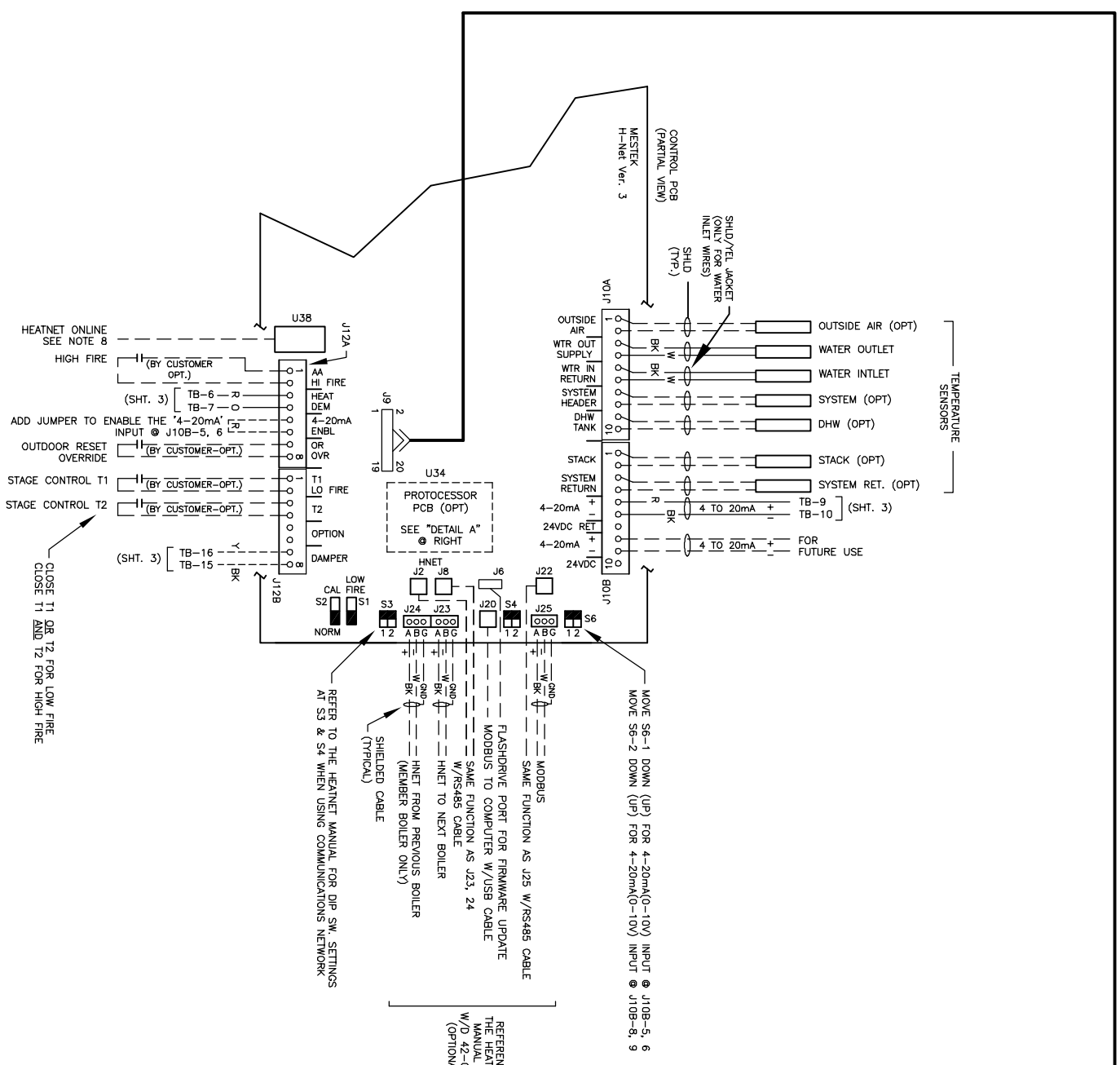
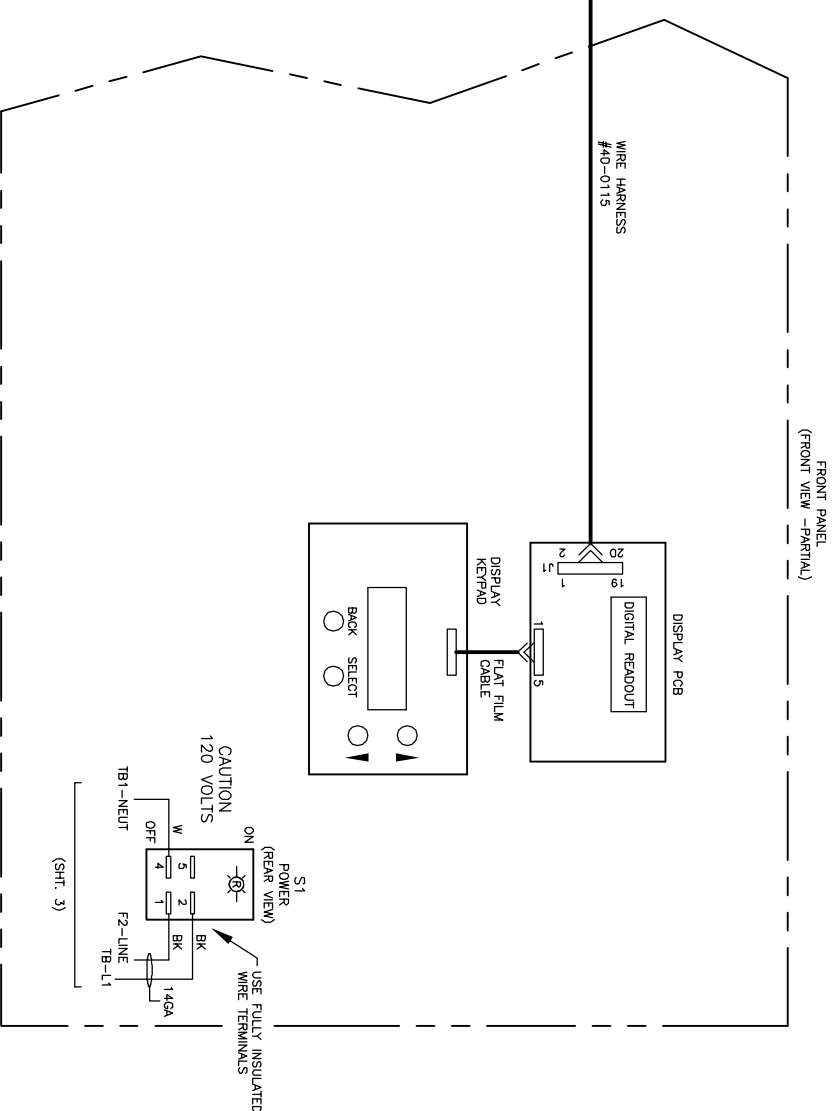
THERMOSTAT OR BOILER START INTRLK (BY CUSTOMER-OPT.)

ENABLE RELAY POWER (FROM CUSTOMER-OPT.)

LOCAL PUMP MOTOR 1 HP MAX (OPT)

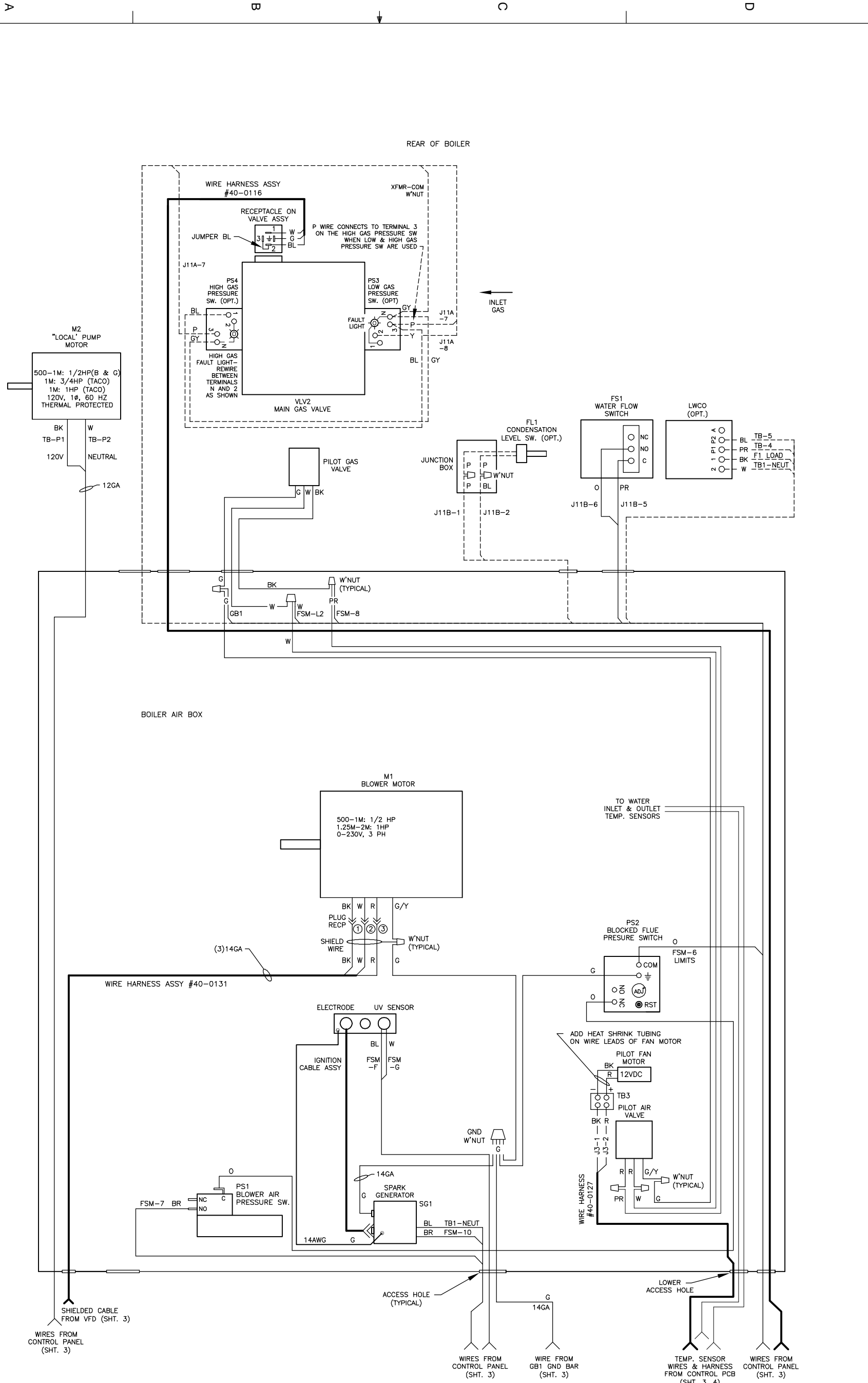
FOR 1M-2M: TERMINALS L1 THRU P2 MUST BE RATED FOR 30 AMPS

POWER SERVICE 120V, 60 HZ FLA: SEE NOTE 7



- NOTES:
1. WIRE COLOR CODE SHALL BE AS FOLLOWS:
 BK-BLACK G-GREEN P-PINK
 BL-BLUE GR-GRAY PR-PURPLE Y-YELLOW
 BR-BROWN O-ORANGE R-RED
 2. WIRE CODE:
 --- FACTORY WIRING
 --- OPTION WIRING
 --- SHIELDED CABLE, MULTI-CONDUCTOR
 3. ---
 4. THE 120VAC POWER CONTROL CIRCUIT MUST NOT BE USED AS A POWER SOURCE FOR FIELD CONTROL DEVICES.
 - 5, 6, 7. ---
 8. HEATNET ONLINE NOT AVAILABLE WITH THE H-NET 'LITE' CONTROL PCB.
- 120V, 1Ø, 60Hz

DIVISION	PRODUCT	DRAWN BY	DATE	DRAWING DESCRIPTION
RBI	MB & MW 500 TO 2000	RT	09/23/08	CONNECTION DIAGRAM
THE PRINT AND ALL INFORMATION THEREON IS PROPERTY OF THE RBI DIVISION OF MESTEK, INC. NEITHER THE PRINT NOR THE INFORMATION THEREON MAY BE REPRODUCED OR USED IN ANY MANNER WHATSOEVER OR DIVULGED TO ANY OTHER PERSON UNLESS SPECIFICALLY AUTHORIZED BY MESTEK, INC.				
		CHECKED BY	DATE	
		RT	09/23/08	DRAWING NUMBER
		APPROVED BY	DATE	
		JPC	10/16/08	42-0501
				SHEET
				4 of 5
				SHEET SIZE
				B
				SCALE
				N/A
				REVISION
				L



120V, 1ϕ, 60HZ

- NOTES:
- WIRE COLOR CODE SHALL BE AS FOLLOWS:
 BK-BLACK G-GREEN P-PINK W-WHITE
 BL-BLUE GY-GRAY PR-PURPLE Y-YELLOW
 BR-BROWN O-ORANGE R-RED
- WIRE CODE:
 ———— FACTORY WIRING
 - - - - - OPTION WIRING
 () SHIELDED CABLE, MULTI-CONDUCTOR
- ALL WIRES SHALL BE #18AWG UNLESS SPECIFIED. WIRE TYPE SHALL BE TEW, 600V, STRANDED 16x30, WITH INSULATION RATED FOR 105°C OR EQUIVALENT.
- USE CABLE TIES, CABLE FASTENERS, SPADE TERMINALS, MALE CONNECTORS, WIRENUTS, ETC. AS REQUIRED.

DIVISION	RBI	PRODUCT	MB & MW 500 TO 2000
DRAWN BY	RT	CHECKED BY	RT
DATE	09/23/08	DATE	09/23/08
APPROVED BY	JPC	DATE	10/16/08
DRAWING DESCRIPTION	CONNECTION DIAGRAM		
SHEET	5 of 5	SHEET SIZE	B
SCALE	N/A	REVISION	L